

Harbour Island Plot 19

Jolly Harbour, St Marys, St Marys

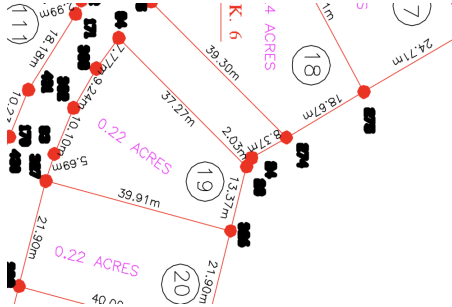
\$550,000

Ref: PW-344

Telephone: +1 268 7645874
Email: info@luxurylocations.com
Portofino Offices, Jolly Harbour, St Mary's, Antigua

LUXURY
LOCATIONS
REAL ESTATE

Gallery



Property Description

Location: Jolly Harbour, Harbour Island, St Marys

0.22 Acre Waterfront Plot – \$550,000

This east-facing 0.22-acre plot on the exclusive Harbour Island in Jolly Harbour offers a rare opportunity to build your dream home in one of Antigua's most secure and sought-after marina communities. With 13.37 meters of private sea wall, the property is perfectly suited for constructing a dock and mooring your boat within the safety of the harbour. Enjoy fantastic breezes and beautiful mountain views from this prime location.

With ample space to create a custom waterfront home, you can wake up to stunning sunrises and serene water views. Excellent local builders are available to help bring your vision to life, and we're here to assist you every step of the way.

Property Highlights:

- 0.22 acres of prime waterfront land in Jolly Harbour
- 13.37 meters of sea wall for dock and boat mooring
- East-facing with gorgeous sunrise and mountain views
- Space to build a luxury custom home
- Secure, gated marina community
- Assistance available with selecting reputable builders

Price: US \$550,000

Contact us today for more details or to schedule a viewing of this exceptional waterfront plot.

Telephone: +1 268 7645874

Email: info@luxurylocations.com

Portofino Offices, Jolly Harbour, St Mary's, Antigua

LUXURY
LOCATIONS
REAL · ESTATE

Additional Info

For Sale	Type: Land	Land Area: 9500 sq m
Harbour Island	Waterfront Plot	Jolly Harbour
Flat Land	Sea Wall	Boat Dock Possible
Land Size : 9500 sq m		

Telephone: +1 268 7645874

Email: info@luxurylocations.com

Portofino Offices, Jolly Harbour, St Mary's, Antigua